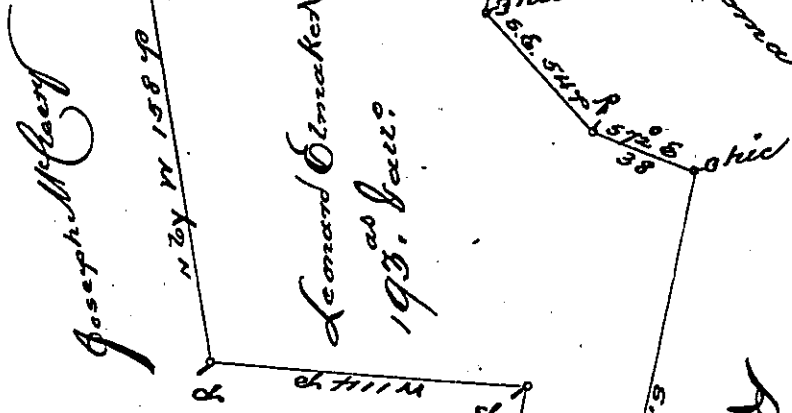


A-39-274

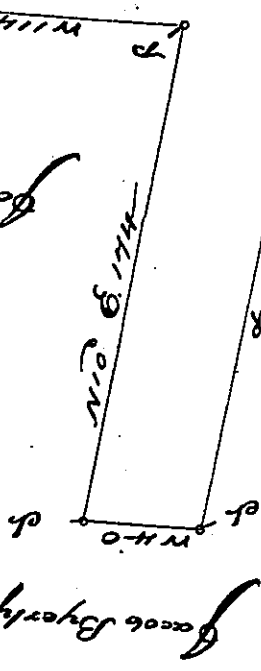
C-132-44  
Robert McCurdy  
Leonard Manna  
C-144-79



Leonard Elmsted  
193<sup>rd</sup> base?

C-89-94

James Light



A-52-267

Roger Perry

By Virtue of a warrant dated the 17<sup>th</sup> day of January A.D. 1749 the above described  
 Tract of Land was survey to Leonard Elmsted. Situate in Orle To, Lancaster County  
 containing 193<sup>rd</sup> base  
 April 23<sup>rd</sup> 1750

Sam Lightfoot

IN TESTIMONY that the above is a copy of the original remaining on file in  
 the Department of Internal Affairs of Pennsylvania, made  
 conformably to an Act of Assembly approved the 16th day of  
 February, 1833, I have hereunto set my Hand and caused  
 the Seal of said Department to be affixed at Harrisburg,  
 this first day of November, 1898

*James W. Pitta*  
 Secretary of Internal Affairs.

